

AQ3

Wet and Dry Vacuum Cleaner

User Manual v1.0



⚠ SAFETY INSTRUCTIONS AND PRECAUTIONS ⚠

In order to avoid accidental injuries such as electric shock and fire caused by improper use, please read all instructions carefully before use and save this instruction properly for future use. This product can only be used indoors, and it is prohibited to install and use this product outdoors, in bathrooms, and around swimming pools.

- The appliance can be intended for use by persons (including children aged 8 years and above) with reduced physical, sensory or mental capabilities, or lack of experience and knowledge, if they have been given supervision or instruction concerning use of the appliance in a safe way and understand the hazards involved.
- This appliance is not intended for use by persons (including children) with reduced physical, sensory or mental capabilities, or lack of experience and knowledge, unless they have been given supervision or instruction concerning use of the appliance by a person responsible for their safety.
- Do not allow children to treat or use the appliance as a toy.
- Children should be supervised to ensure that they do not play with the appliance.
- Children shall not play with the appliance, cleaning and user maintenance shall not be made by children without supervision.
- The appliance is only to be used with the power supply unit provided with the appliance.
- This appliance contains battery that is non user-replaceable and only replaceable by skilled persons.
- For the purpose of recharging the battery, only use the detachable power supply unit provided with the appliance.



[symbol IEC 60417-6181 (2013-03)]

detachable supply unit

- Make sure the appliance is turned off before replacing the roller brush, cleaning and maintaining the appliance.
- Do not touch the plug or any live part of the appliance with wet hands to avoid the risk of electric shock.
- If the charging power cord is broken and damaged, please call the professional maintenance personnel to replace it to avoid hazards.
- Keep the ventilation and moving parts of the appliance away from long hair, loose clothing, fingers, and other parts of the body.
- During use, if you find leakage or the motor temperature is too high and abnormal sounds, such as overheating, abnormal sounds, odor, sudden drop in suction, etc., you should stop using it and contact us for warranty services.
- If you do not use the appliance for a long time, put the appliance on the base station and keep it charged.
- After use, clean the dirty water tank in time and keep the ventilation path unobstructed so as to avoid blockage, which will cause the suction to drop or the motor to heat up, which will affect the service life of the appliance.
- After use, store the appliance in a dry place. A damp place will affect the insulation and service life of the appliance.
- Check the opening of the nozzle regularly. If there is any blockage, please remove it in time to avoid the decrease in suction caused by the blockage and affect the performance of the appliance.
- The main unit of the appliance and base station cannot be soaked in water or rinsed.

- When the appliance fails, do not attempt to repair it by yourself. Call our company for warranty services.
- Do not shake the appliance up and down or collide violently, and do not tilt the appliance to one side or lay it flat to prevent sewage from flowing into the main unit.
- Do not use the appliance to vacuum the laser printer or toner used inside the copier, as these objects may cause a fire or explosion.
- Do not use the appliance to clean flammable or explosive liquids such as gasoline. Do not use toxic solutions such as chlorine bleach, ammonia, sewer cleaners, or other liquids.
- These instructions are also available in our website www.famitec.com

⚠ PRECAUTIONS ⚠

1. Do not use the detergent that contain acid, toxic, alkali solutions, foaming substances, or substances harmful to the appliance and environment. Read the ingredients and user instructions of the detergent before use. If a large amount of detergent is added, more foam will be generated during use, which may leak into the motor and cause danger.
2. Do not apply any scented products to the filter of the appliance. The chemicals in such products are known to be flammable and cause the appliance to catch fire.
3. The base station of the appliance can only be used on this appliance to avoid damage or any danger caused by using it on other products.
4. To avoid clogging of the filter, it is recommended to clean the filter regularly and to replace the filter every 3-6 months.
5. All technical and other data reflected in manual were obtained by our company or a designated third-party testing company, and our company owns the final interpretation rights.
6. The performance of the appliance in the actual living environment may vary due to changes in environmental conditions.

⚠ WARNINGS ⚠

- Do not use the appliance to clean smoking or burning objects such as charcoal, cigarette butts, or matches.
- Do not use the appliance to clean sharp or hard objects, such as nails, glass, screws, or coins, or it will cause damage to the scrubber.
- Do not use the appliance to clean shoe polish, paint, pigment, and other stains with strong grease, strong stickiness, or strong staining.
- Do not disassemble the appliance by yourself. There are no customer serviceable parts in this machine, and do not attempt to change the performance of the appliance, otherwise it will cause danger.
- Do not get the appliance wet, otherwise it may cause fire and electric shock due to a short circuit in the appliance.

TABLE OF CONTENTS

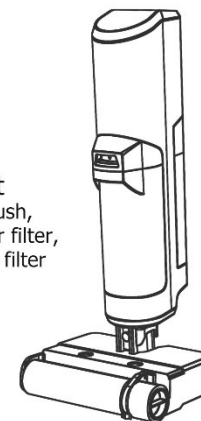
1. Product Description	
1.1 Inside the Box	01
1.2 Parts Description	02
1.2.1 Wet and Dry Vacuum Cleaner	02
1.2.2 Charging and Cleaning Base Station	03
1.2.3 Clean and Dirty Water Tank	03
2. Use of Product	
2.1 Operation Precautions	04
2.2 First Time Installation	05
2.3 First Time Battery Charging	06
2.4 User Interface	07-08
2.5 Operation	08-10
2.6 Removing and Filling of Clean Water Tank	11
2.7 Removing and Cleaning Dirty Water Tank	11
3. Cleaning and Maintenance	
3.1 Cleaning of Dirty Water Tank	12
3.2 Cleaning of Dirty Water Tank Filter	12
3.3 Deep Cleaning of Dirty Water Tank	13
3.4 Cleaning of Clean Water Tank Filter	14
3.5 Deep Cleaning of Clean Water Water Tank	14
3.6 Cleaning of Vacuum Cleaner	15
3.7 Cleaning of Roller Brush and Roller Brush Cover	15
4. Specifications	16
5. FAQ and Trouble Shooting	17
6. Warranty Services	18

PRODUCT DESCRIPTION

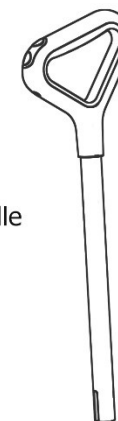
1.1 Inside the Box

MAIN COMPONENTS

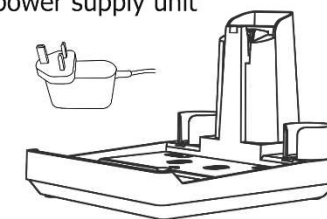
Main unit
w/roller brush,
clean water filter,
dirty water filter
installed



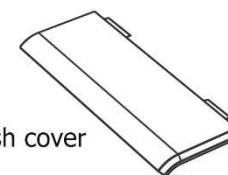
Handle



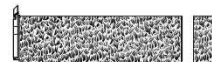
Base station and
power supply unit



Roller brush cover



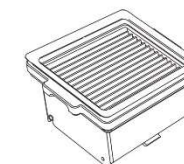
ACCESSORIES



Roller
brush



Clean water
filter



Dirty water
filter



Cleaning
brush

PRODUCT DESCRIPTION

1.2 Parts Description

1.2.1 Wet and Dry Vacuum Cleaner

Control keys

Handle

LED Display

Dirty water tank release key

Water level line

Front tank (Dirty water tank)

Roller brush cover

Roller brush

Handle removal key

Clean water tank release key

Clean water tank handle

Water level line

Rear tank (Clean water tank)

Rotatory axis

Brush head

Nozzle

PRODUCT DESCRIPTION

1.2.2 Charging and Cleaning Base Station

Charging contact pin

Cleaning brush storage slot

Roller brush storage slot

Fan port

DC jack for power supply unit

Front view

Back view

1.2.3 Clean and Dirty Water Tank

Dirty water filter

Front tank (Dirty water tank)

Top cover

Water tank body

Rear tank (Clean water tank)

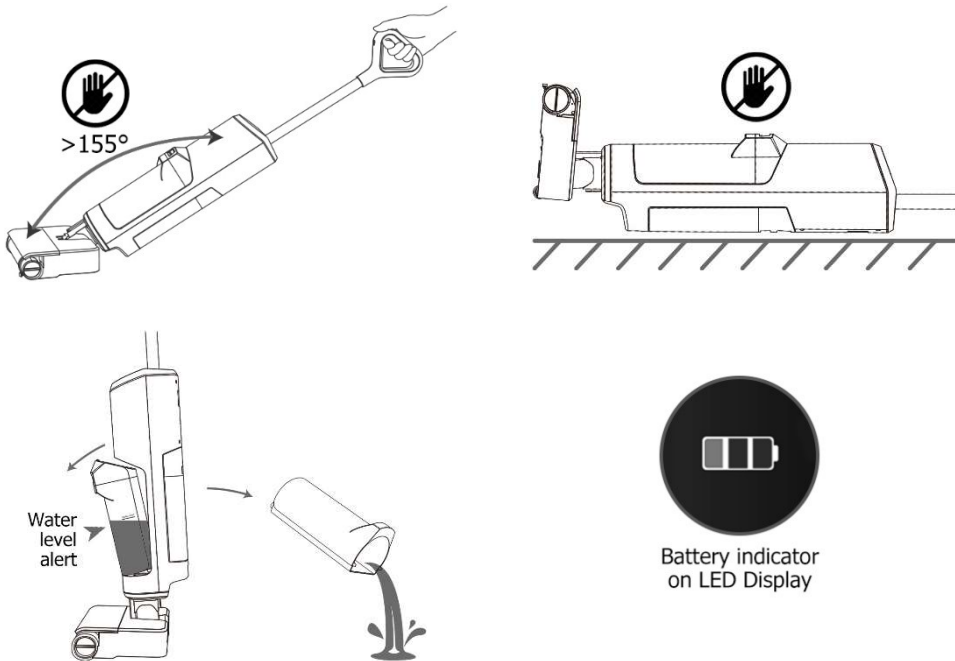
Flip-top cover

Water tank body

USE OF PRODUCT

2.1 Operation Precautions

- When the main unit is stand upward, it will automatically shut down if there is no operation within 20 seconds.
- When the appliance is operation, do not lift or move the main unit up or down.
- Do not recline the main unit to one side or lay the main unit flat to prevent sewage from flowing back into the motor and causing damage.
- Do not recline the main unit more than 155° to protect against water leakage.
- Do not use the appliance to clean the foamy liquids or corrosive liquids.
- Do not put the toxic & corrosive detergent to clean water tank for Vacuum and Wash (Auto or Turbo mode).
- Place the main unit to base station after the operation. Empty the dirty water tank and fill the water in the clean water tank to the recommend "Water Level" line before starting of self-clean process.
- Charge the battery of appliance and ensure the minimum battery level (1 green LED light of battery indicator is lighted up) is achieved before press the "≡" button to start the self-clean process.
- After the self-clean process is completed, pour out the sewage from the dirty water tank and clean the dirty water tank with detergent and cleaning brush. Empty the clean water tank also.

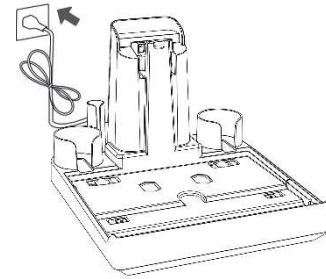


USE OF PRODUCT

2.2 First Time Installation

Install the base station

Place the base station against the wall and connect the power cord.

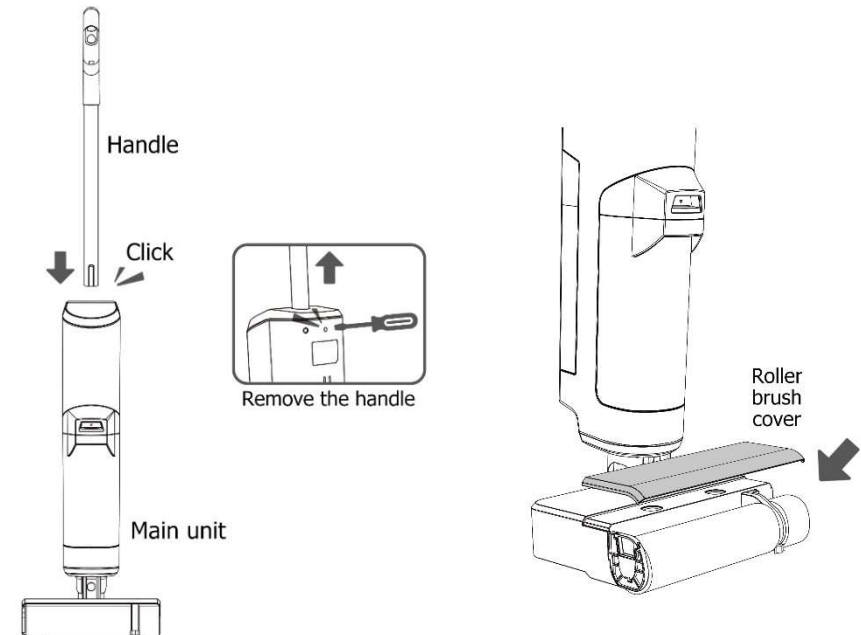


Note: Do not place the base station near heat sources or damp areas such as radiators, kitchens, or bathrooms

Install the main unit

Insert the handle into the fixed slot of the appliance in the vertical direction. A "click" sound indicates that the installation is successful. Check that the handle is installed stably without loosening.

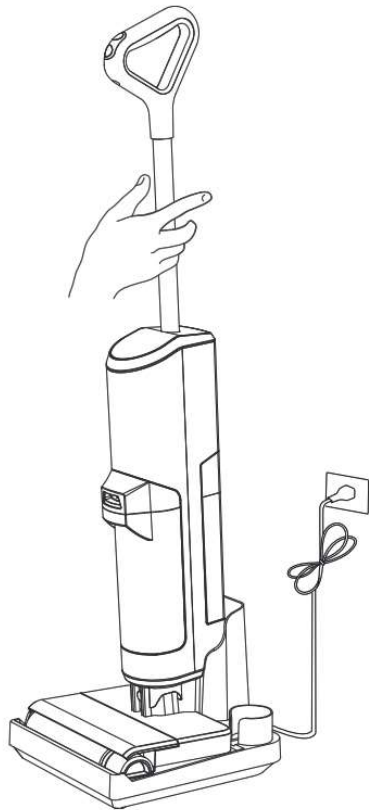
Align the Roller brush cover with the clips and install it on the brush head.



USE OF PRODUCT

2.3 First Time Battery Charging

After the base station is powered on, place the main unit correctly on the base station, and the main unit will automatically charge immediately. The Battery charging indicator is lighted up and flashes, and it is fully charged once 3 green LED lights are all lighted up.

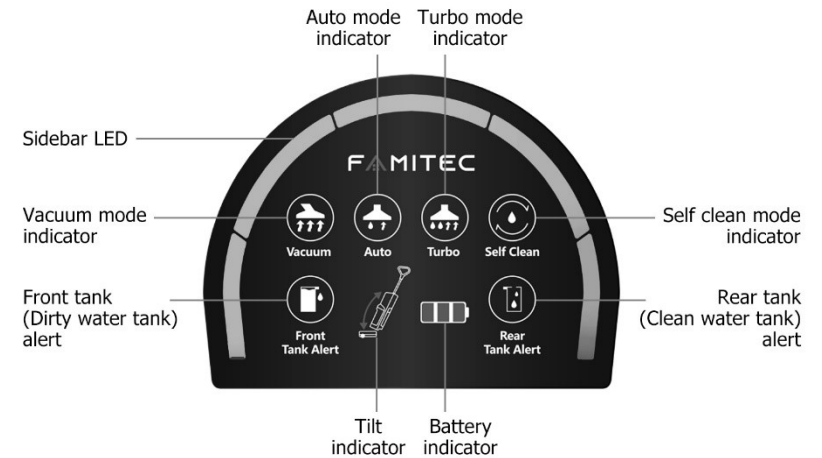


Note:

- Before using it for the first time, please put the appliance on the base station and charge it for more than 3 hours or until the 3 green LED lights of battery indicator are all lighted up.
- After the appliance is fully charged, and no further action in five minutes, the display and the appliance will turn off.
- Make sure the surroundings are unobstructed and away from fire and water sources.

USE OF PRODUCT

2.4 User Interface



Icon	Function / Indication
	Vacuum mode is helpful in vacuum of dusts, hairs, shredded paper on hard floor, rugs and mats before "vacuum & wash" since some hairs and papers were struck on the floor after they are wet.
	Auto mode is vacuum & wash at the same with normal suction power for hard floor.
	Turbo mode is vacuum & wash at the same time with maximum suction power for hard floor.
	Self clean mode is automatic cleaning process of roller brush.
	Front Tank alert is flashing when the dirty water tank is full or removed in operation.
	Rear Tank alert is flashing when the clean water tank is empty or removed in operation.
	Sidebar LED is lighted up from left to right when power on the main unit. And the LED is off from right to left when switch off the main unit.
	Tilt indicator indicates the pulse status, and recline the main unit to keep on the operation. If there is no action in 20 seconds, then the appliance will automatically shut down.

USE OF PRODUCT

Icon	Function / Indication
------	-----------------------



3 green LED lights lighted up = Full
2 green LED lights lighted up = ~ 67%
1 green LED light lighted up = ~ 33 %
1 red LED light lighted up = ~ 20% (place the main unit to base station for battery charging)
1 red LED light flashing = Low Battery. The appliance will switch off soon

2.5 Operation

Power key (Long press time is one second, short press time is instant)

Function key (Short press to switch modes, Vacuum - Auto - Turbo)

Power On:

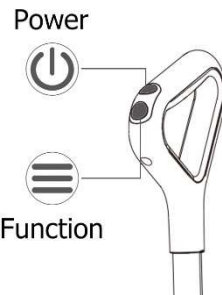
Pick up the main unit from the base station, and the brush does not work in a standing state. You are required to recline main unit, and long press the "" button to power on the appliance. It enters the vacuum mode and starts to work. Short press the "" key to switch between three modes (Vacuum, Auto, and Turbo) cyclically.

Pause:

After short pressing the "" key or tilting the handle forward to the standing position, the main unit will temporary stop working. If you recline the main unit, it will resume working automatically. It will be automatically shut down if there is no operation within 20 seconds in the standing state.

Shutdown:

Long press the "" key to shut down.

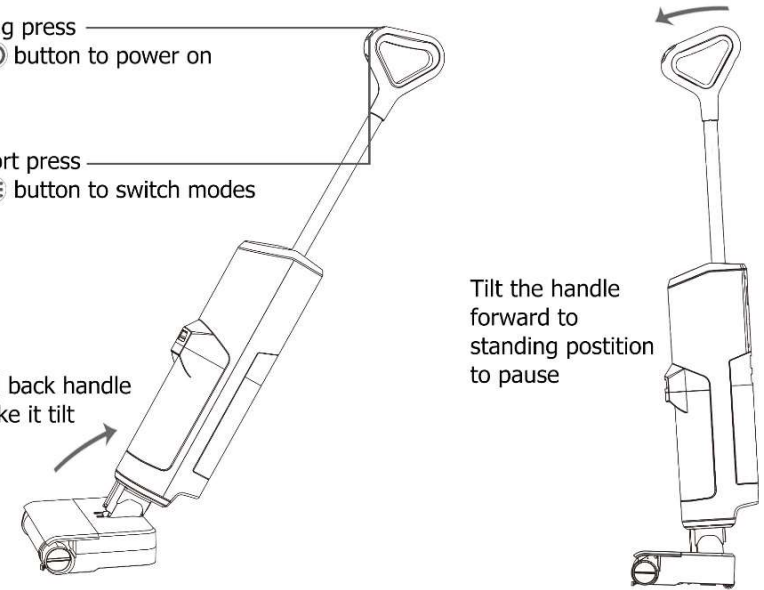


USE OF PRODUCT

2. Long press the button to power on

3. Short press the button to switch modes

1. Pull back handle to make it tilt



Tilt the handle forward to standing position to pause

Auto & Turbo mode operation

If there is no water or the water level is very low in the clean water tank when it starts the operation, it takes 5 seconds to detect the clean water level and then the Rear tank alert is flashing. After you refill the water and re-install the clean water tank in place, short press the "" button and the operation will continue.

If the sewage level is full and exceed the "Water Level" line in the dirty water tank in the operation, the Front tank alert is flashing. The operation is continued after the dirty water tank is empty and re-install in place.

One-button self-clean (Duration: ~27 minutes)

Note: self-clean process can only be started when the minimum battery capacity is 1 green LED light of Battery indicator is lighted up

USE OF PRODUCT

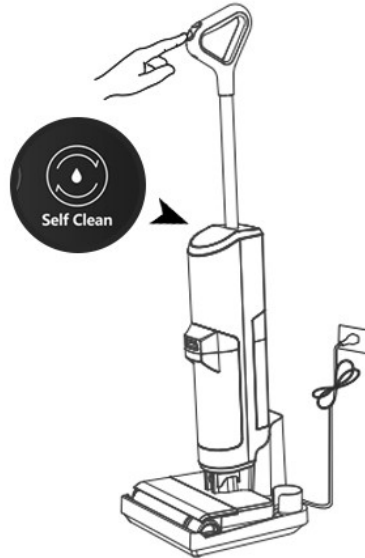
When the main unit is on the base station, short press the "≡" button on the handle, the self-clean mode indicator is light up, the main unit will enter the self-clean process and start cleaning the roller brush. After cleaning the roller brush, it will automatically start the air-drying process.

Self-clean process: spray water first, and then the roller brush will rotate and stopping intermittently for self-clean. After this cycle operation, it will perform a rapid water-throwing operation and finally enter the air-drying state. Lastly, the roller brush will run slowly until the self-clean process is completed.

During the self-clean process, short press the "⏻" button. The self-clean will stop immediately. If you short press "≡" button again, the main unit will re-start the self-clean process from the beginning.

After the self-clean process is completed, the appliance will automatically shut down within 5 minutes after the battery is fully charged and without any operation.

Press ≡ button when the main unit is on charging and cleaning base station to activate self clean process



Note :

1. Pour out the sewage from the dirty water tank and fill the water in the clean water tank before starting the self-clean process.
2. If the dirty water tank is full and front tank alert is flashing in the process, pour out the sewage from dirty water tank and ensure that the tank is empty and re-installed properly. The self-clean process will continue.
3. If the clean water tank is empty or Rear tank is flashing in the process, refill the water to clean water tank and ensure that the tank is not exceed the recommend "water level" line, and also ensure that the tank is re-installed properly. Short press "≡" button again, the self-clean process will continue.

USE OF PRODUCT

2.6 Removing and Filling of Clean Water Tank

Disassembly:

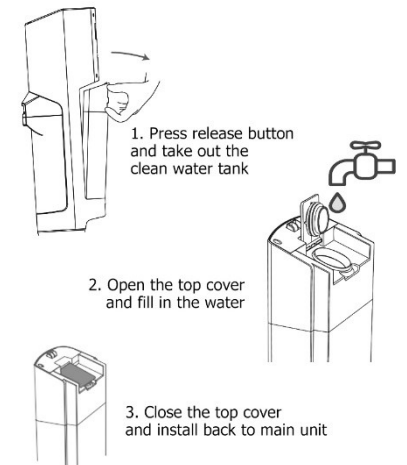
Hold the main unit with one hand, press the release button of the clean water tank with the thumb of the other hand, and take out the clean water tank.

Filling water (or adding detergent if request):

Flip open the top cover of the clean water tank and pour in water. For deep cleaning purposes, pour an appropriate amount of detergent into the water tank to dilute it, and shake it evenly before use

Installation:

Hold the main unit with one hand and hold the upper sides of the clean water tank with the other hand. Align the bottom of the clean water tank with the support position of the main unit and push inwards. After you hear a "click", the installation is successful.



2.7 Removing and Empty Dirty Water Tank

Disassembly:

Hold the main unit with one hand and press the dirty water tank release key with the other hand while pulling out the water tank outwards.

Take out the filter and top cover in an upwards direction pour out the sewage.

Installation:

Reinstall the upper cover of the dirty water tank first, and then install the filter.

Hold the main unit with one hand and hold the dirty water tank with the other hand. Align the bottom of the dirty water tank with the support position of the main unit and push inwards. After you hear a "click", the installation is successful.



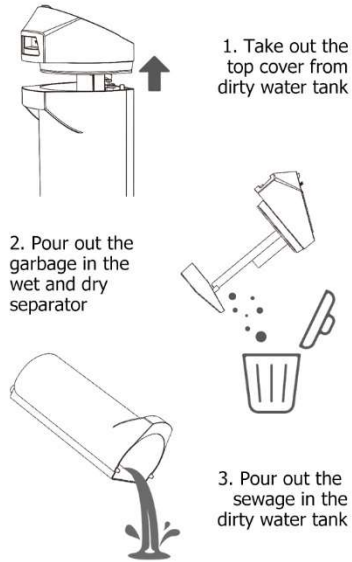
CLEANING AND MAINTENANCE

3.1 Cleaning of Dirty Water Tank

Simple cleaning:

When the water level of the dirty water tank exceeds the 'Water Level' line, Front Tank alert is flashing, take out the dirty water tank (refer to point 2.7). Pour out the garbage in the wet and dry separator and pour out the sewage in the dirty water tank, and then rinse the dirty water tank with clean water.

Note: pour sewage and wet waste into the sink with the anti-clogging filter plug to prevent the sewer from clogging.



3.2 Cleaning of Dirty Water Tank Filter

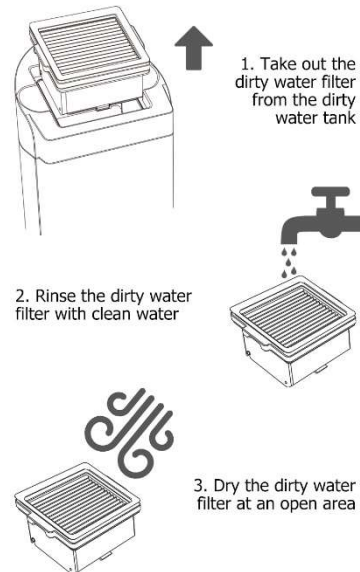
Remove the filter:

Hold the filter removal keys on both sides and lift the filter up.

Use detergent to clean, rinse with clean water, and dry it in an open area. Install the filter back in place after cleaning. A soft-bristled cleaning brush can be used to assist in cleaning.

Note: Do not use a stiff or wire brush to clean the filter.

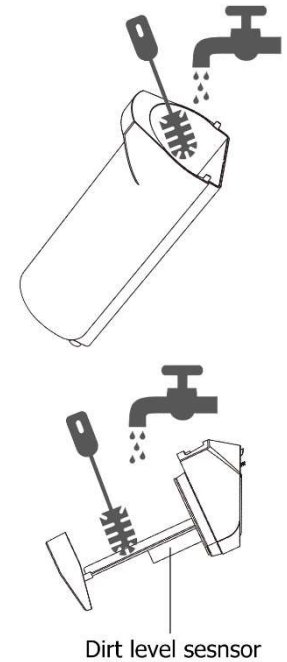
Note: After the filter has been used for a period of time, it needs to be disassembled and replaced according to the usage conditions. It can be cleaned regularly, dried in an open area, and reuse. It is recommended to replace the filter with a new one every 3-6 months.



CLEANING AND MAINTENANCE

3.3 Deep Cleaning of Dirty Water Tank

Use tap water to rinse the dirty water tank and the wet and dry separator on the top cover until it is clean. You can use the detergent and cleaning brush to clean the dirty water tank, the wet and dry separator, and the dirt level sensor.

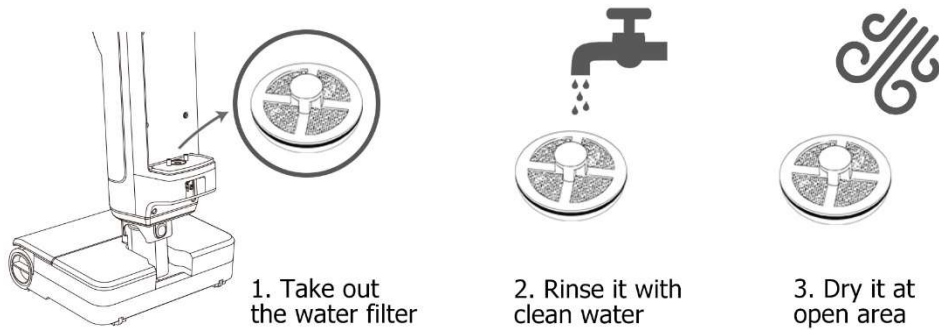


Note: If you find that the suction nozzle of the brush head is blocked or dirty, clean it up in time. If the dirty water tank is not cleaned thoroughly, the Front tank alert will flash, even if the dirty water tank is empty.

Note: Clean the dirt level sensor also, the Front tank alert will flash even though the dirty water tank is empty

CLEANING AND MAINTENANCE

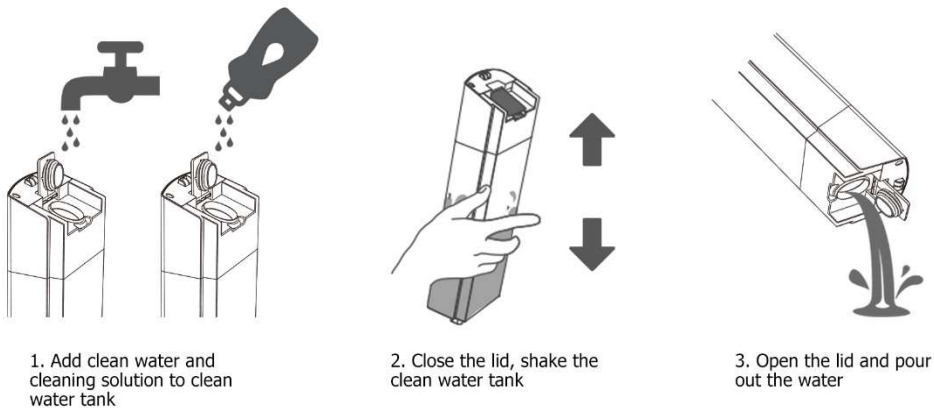
3.4 Cleaning of Clean Water Tank Filter



Note: After using the water filter for a period of time, it needs to be disassembled and replaced according to the usage conditions. It can be cleaned regularly, dried in an open area, and reuse. It is recommended to replace the new water filter every 3-6 months.

3.5 Deep Cleaning of Clean Water Tank

Add the water and detergent, cover the lid and shake the clean water tank. During the cleaning process, you can use a cleaning brush to assist in cleaning. After cleaning, rinse the clean water tank with clean water.



CLEANING AND MAINTENANCE

3.6 Cleaning of appliance

Before or after using the appliance, please make sure that the appliance is turned off, and then use a dry cloth or paper towel to clean the dust adhering to the body.

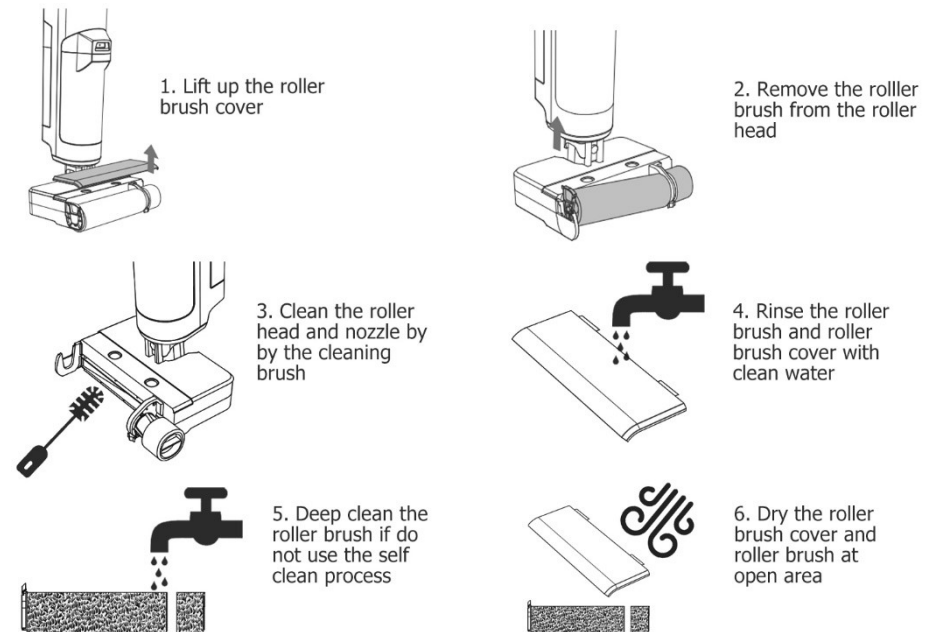


Warning

Do not rinse the main unit directly with water at the faucet.

3.7 Cleaning of Roller Brush and Roller Brush Cover

Lift up the roller brush cover, take out the roller brush for cleaning. Use a dry cloth or paper towel to clean foreign objects.



Warning: Do not rinse the brush heads with water directly at the faucet.

SPECIFICATIONS

Product Name	AQ3 Wet & Dry Vacuum Cleaner
Main Unit Dimension	260 x 260 x 1090mm
Main Unit Weight	~3.8Kgs
Base Station Dimension	309 x 283 x 232mm
Base Station Weight	~1.2Kgs
Charging Time	3.5 +/- 0.5 hours
Model no.	32-203-XX (XX stands for different version)
Power Supply unit Input	100-240V ~, 50/60Hz, 0.8A
Power Supply unit Output	26.5V, 1.2A, 31.8W
Dirty Water Tank Capacity	600ml
Clean Water Tank Capacity	650ml
Battery Capacity	2,400mAh

FAQ AND TROUBLE SHOOTING

Problems	Possible cause	Solutions
The Appliance is not working	Running out of battery	Charging after use and ensure that the appliance is full charged before use
	Overheat protection of battery circuit.	Wait for the battery temperature to return to normal and try again.
	The sewage in the dirty water tank exceeds the "Water Level" line.	Clean the dirty water tank and scrub the dirt level sensor at the upper cover of the dirty water tank. Install the tank back on and try again.
	Dirty water tank or roller brush not in place.	Install the dirty water tank and roller brush properly.
	Clean water tank is out of water.	Fill water into clean water tank.
	Clogged roller brush or dirty water tank pipes.	Clean the roller brush and pipe.
Unable to charge	Roller brush stuck.	Clean the roller brush.
	The base station not powered.	Check the contact of electric socket and power supply unit.
	Bad contact of battery charging pins.	Clean the surface of contact pin.
	Damaged power cord.	Contact manufacturer for warranty service.
Unable to start self-clean process	The main unit was not installed in place at the base station.	Make sure the main unit is in place by press it lightly.
	Dirty water tank full.	Pour sewage out of dirty water tank and install back properly.
	Dirty water tank not installed.	Ensure the dirty water tank is installed in place.
	Low or depleted battery.	charging and ensure the minimum battery level is achieved.
Abnormal sound from running motor	Clean water tank is out of water.	Fill water (not exceed the "water Level" line) into clean water tank and installed back properly. Short press "≡" to continue the self clean process.
	The roller brush is stuck, or the sewage flows back into the motor.	Correctly install the roller brush and clean the roller brush. Operating the appliance correctly to prevent sewage from flowing back into the main unit.
Suction power decrease	The dirty water tank suction pipe is clogged, or the filter is dirty.	Clean the dirty water pipes, dirty water tank and the filter.

WARRANTY SERVICES

Famitec provide the product warranty services to the original purchaser of this product that this product will be free from defects in material and workmanship under normal use and service for 12 months from date of purchase. We will, at its option, repair or replace with a new or refurbished product. We reserve the right, before having any obligation under this limited warranty, to inspect the product, and all costs of shipping the product for inspection and warranty service shall be borne solely by the purchaser.

For the fastest processing of a warranty claim, the Purchaser should e-mail info@famitec.com and include the product name and model #, proof of original purchase, complete contact information, and detailed information about the issue, including pictures when applicable.

The limited warranty is valid only in accordance with the following conditions:

1. The product is purchased directly from Famitec, or an authorized reseller, or distributor.
2. Only the original purchaser is covered by this warranty. This warranty is not transferable.
3. Product is for personal use only. This warranty is void if the product is used in a commercial or institutional establishment.
4. This warranty does not cover normal wear and tear, or damage caused by misuse, abuse, negligence, accident, acts of nature, or unauthorized modification or repair.
5. Purchaser must present acceptable proof of purchase for the product.

Disposal



When this device has reached the end of its life, please dispose of the device properly. This and other electrical appliance contain valuable materials that can be used recycled. Electronic waste may be harmful to our environment if not disposed of properly.

We ask that you follow your governing agency's rules and regulations when disposing of electronic appliances. Pleased find an authorized recycling facility near you.

Contact

If you have any questions or concerns about operation or warranty of this product, please contact our customer service by email info@famitec.com

